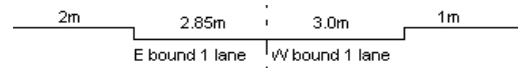
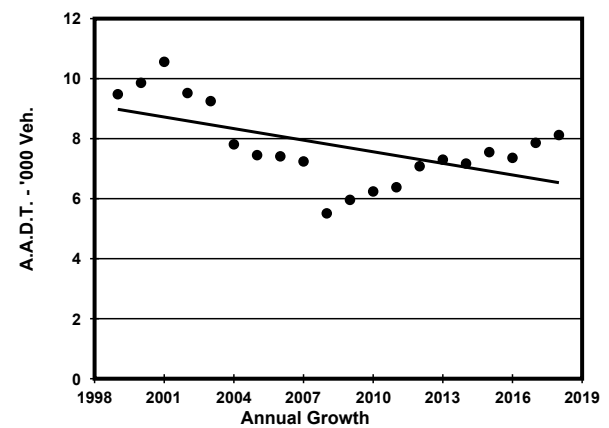
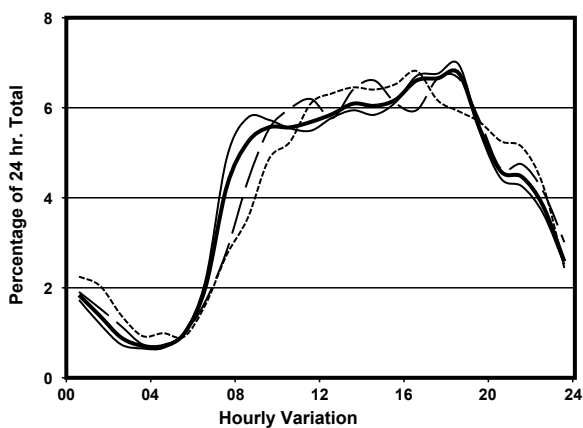
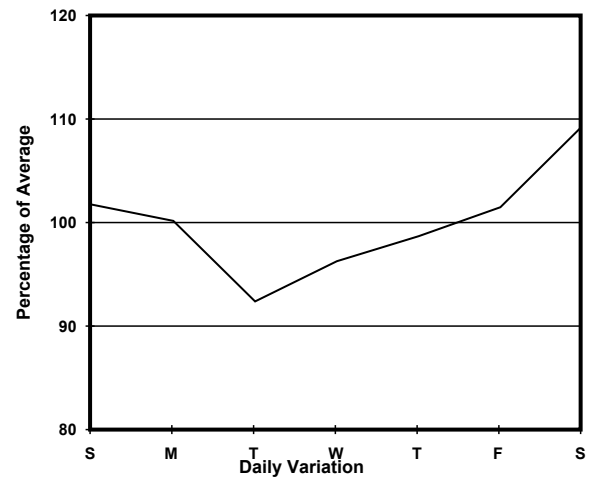
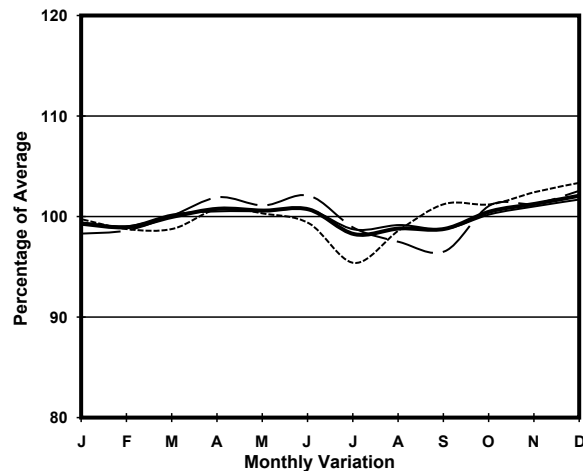


YEAR 2018
 COVERAGE (B) STATION 6208
 ROAD NETWORK MAJOR
 ROAD TYPE RURAL ROAD

LINK KAM SHEUNG RD (from KAM TIN RD to KAM TIN RD)



1. TRAFFIC FLOW VARIATION AND GROWTH



— All day — Mon.- Fri. Sat. - - - - - Sun.

2. TRAFFIC CHARACTERISTICS (BY DIRECTION)

Parameter	All - Day	Mon. - Fri.	Sat.	Sun.
EAST BOUND				
A.A.D.T.	4360	4260	4730	4440
R 12 / 24 - %	68.1	69.2	67.2	64.3
R 16 / 24 - %	88.7	89.1	88.1	86.9
AM Peak Hour	0900-1000	0900-1000	0900-1000	0900-1000
One-way flow at AM peak hour	230	240	250	180
T - % (AM)	-	5.8	-	-
PM Peak Hour	1600-1700	1600-1700	1800-1900	1600-1700
One-way flow at PM peak hour	300	290	300	320
T - % (PM)	-	2.9	-	-
Prop.of commercial vehicles - 16 hr.	-	6.8	-	-
WEST BOUND				
A.A.D.T.	3760	3680	4140	3810
R 12 / 24 - %	73.2	74.3	71	70.4
R 16 / 24 - %	89.1	89.5	88.5	88
AM Peak Hour	0900-1000	0800-0900	0900-1000	0900-1000
One-way flow at AM peak hour	220	230	240	220
T - % (AM)	-	9.8	-	-
PM Peak Hour	1800-1900	1800-1900	1700-1800	1700-1800
One-way flow at PM peak hour	260	260	300	250
T - % (PM)	-	3	-	-
Prop.of commercial vehicles - 16 hr.	-	7.8	-	-

3. OTHER INFORMATION AND COMMENT

4. Vehicle classification and occupancy - Monday to Friday

Time		Class of vehicle									
		Motor Cycle	Private Car	Taxi	Private LB	PLB	Goods veh.		Non Fr. Bus	Fr. Bus	
							Light	M & H		SD	DD
0700-0800	Pro	1.1	34.2	18.7	2.2	12.1	22.0	2.2	4.4	0.0	3.0
	Ocp	1.0	1.2	1.6	9.5	7.5	1.6	1.0	28.5	0.0	23.8
0800-0900	Pro	0.8	60.0	5.8	2.5	5.8	17.2	4.1	1.6	0.0	2.3
	Ocp	1.0	1.3	2.0	9.7	9.4	2.1	1.2	18.0	0.0	26.5
0900-1000	Pro	3.2	42.8	11.8	1.1	10.7	22.5	5.3	0.0	0.0	2.7
	Ocp	1.3	1.3	1.5	2.0	7.7	1.2	1.0	0.0	0.0	30.6
1000-1100	Pro	2.0	38.6	10.9	0.0	10.9	27.7	6.9	0.0	0.0	3.0
	Ocp	1.0	1.3	1.7	0.0	7.9	1.5	1.0	0.0	0.0	18.9
1100-1200	Pro	1.9	43.4	7.7	1.0	10.6	20.2	11.6	1.0	0.0	2.7
	Ocp	1.0	1.2	1.6	1.0	6.7	1.3	1.0	1.0	0.0	20.0
1200-1300	Pro	1.0	48.8	8.3	0.0	11.4	22.9	4.2	1.0	0.0	2.3
	Ocp	1.0	1.3	1.8	0.0	10.8	1.5	1.3	8.0	0.0	25.3
1300-1400	Pro	0.0	42.0	4.3	1.1	7.5	34.5	7.5	0.0	0.0	3.0
	Ocp	0.0	1.4	2.0	3.0	7.6	1.7	1.0	0.0	0.0	23.2
1400-1500	Pro	0.0	49.4	4.0	1.0	11.9	25.7	4.9	0.0	0.0	3.2
	Ocp	0.0	1.3	1.8	5.0	9.0	1.3	1.4	0.0	0.0	20.2
1500-1600	Pro	0.9	50.9	3.7	0.0	12.0	22.2	7.4	0.0	0.0	2.8
	Ocp	1.0	1.3	1.3	0.0	9.3	1.5	1.1	0.0	0.0	21.6
1600-1700	Pro	2.3	43.3	6.1	3.8	9.9	29.6	3.0	0.0	0.0	2.1
	Ocp	1.0	1.3	1.8	7.2	10.0	1.4	1.0	0.0	0.0	25.2
1700-1800	Pro	1.5	50.3	12.8	3.0	9.8	17.3	2.3	0.8	0.0	2.4
	Ocp	1.0	1.3	1.9	4.3	9.8	1.6	1.3	18.0	0.0	29.4
1800-1900 Peak hour	Pro	0.8	61.9	10.3	1.6	7.1	12.7	0.0	3.2	0.0	2.4
	Ocp	1.0	1.3	2.2	1.5	12.9	1.3	0.0	12.8	0.0	32.3
1900-2000	Pro	4.1	59.6	14.9	0.0	5.0	12.4	0.0	1.7	0.0	2.3
	Ocp	1.0	1.6	1.9	0.0	10.3	1.5	0.0	17.0	0.0	22.4
2000-2100	Pro	2.0	66.5	8.8	0.0	5.9	12.7	2.0	0.0	0.0	2.2
	Ocp	1.0	1.5	1.6	0.0	6.7	1.5	1.0	0.0	0.0	23.2
2100-2200	Pro	1.1	60.8	17.7	0.0	7.7	8.8	1.1	0.0	0.0	2.8
	Ocp	1.0	1.4	2.2	0.0	4.0	1.3	1.0	0.0	0.0	16.0
2200-2300	Pro	1.4	59.5	19.4	0.0	6.9	9.7	0.0	0.0	0.0	3.1
	Ocp	1.0	1.3	2.1	0.0	8.0	1.4	0.0	0.0	0.0	21.3
16 hours	Pro	1.5	51.0	10.0	1.2	9.0	19.9	3.9	0.9	0.0	2.6
	Ocp	1.0	1.3	1.8	5.8	8.8	1.5	1.1	17.5	0.0	23.8

Legend

Pro. Proportion of vehicles in % (Sum may not add up to 100% due to figure rounding)*

Ocp. Average occupancy of vehicles including both driver and passengers*

M&H Medium and Heavy

***** All traffic data are collected from combined bounds except for one way traffic